

Pupil Premium Student Numbers and Funding 2014/15

	Number of Children (FTE)	Rate	Total
Deprivation Pupil Premium	363.5	£935.00	£339,872.50
Service Child Premium	0	£300.00	£0.00
Adopted from Care Premium	0	£1,900.00	£0.00
Looked After Premium	13	£1,900.00	£24,700.00
Total	376.5		£364,572.50

Pupil Premium Student Breakdown by Year 2014/15

	Deprivation Pupil Premium	Looked After Premium	Total
Year 7	73	0	73
Year 8	74	5	79
Year 9	77	2	79
Year 10	74 (+1 0.5 FTE)	5	80
Year 11	66	1	67

Pupil Premium Academic Performance

5 A*-C Including English and Mathematics								
	Type	10/11	11/12	12/13	13/14	14/15	Predicted 15/16	Trend
School	School Pupil Premium	60%	58%	51%	64%	51%	52%	
	School Non Pupil Premium	69%	62%	73%	71%	60%	88%	
	School All	64%	61%	63%	68%	56%	63%	
National	National Pupil Premium	35%	36%	41%	40%	36%	Unavailable	
	National Non Pupil Premium	62%	63%	68%	68%	63%		
	National All	58%	59%	61%	60%	56%		

A*-C English									
	Type	10/11	11/12	12/13	13/14	14/15	Predicted 15/16	Trend	
School	School Pupil Premium	69%	73%	67%	75%	81%	84%		
	School Non Pupil Premium	81%	72%	79%	77%	80%	83%		
	School All	79%	72%	74%	76%	80%	83%		
National	National Pupil Premium	50%	51%	No longer reported from 2012/13					
	National Non Pupil Premium	74%	74%						
	National All	71%	68%						

A*-C Mathematics									
	Type	10/11	11/12	12/13	13/14	14/15	Predicted 15/16	Trend	
School	School Pupil Premium	63%	70%	65%	77%	61%	58%		
	School Non Pupil Premium	73%	72%	82%	76%	67%	78%		
	School All	71%	71%	75%	76%	64%	69%		
National	National Pupil Premium	46%	52%	No longer reported from 2012/13					
	National Non Pupil Premium	70%	76%						
	National All	67%	70%						

English 3 Levels Progress								
	Type	10/11	11/12	12/13	13/14	14/15	Predicted 15/16	Trend
School	School Pupil Premium	76%	65%	66%	84%	76%	No longer reported	
	School Non Pupil Premium	80%	72%	80%	80%	79%		
	School All	78%	69%	74%	82%	78%		
National	National Pupil Premium	55%	52%	56%	58%	57%		
	National Non Pupil Premium	74%	70%	74%	75%	74%		
	National All	72%	68%	69%	70%	69%		

Mathematics 3 Levels Progress								
	Type	10/11	11/12	12/13	13/14	14/15	Predicted 15/16	Trend
School	School Pupil Premium	67%	68%	77%	70%	58%	No longer reported	
	School Non Pupil Premium	78%	73%	80%	69%	71%		
	School All	72%	71%	79%	70%	65%		
National	National Pupil Premium	44%	50%	54%	48%	49%		
	National Non Pupil Premium	68%	72%	76%	71%	72%		
	National All	65%	69%	70%	65%	66%		

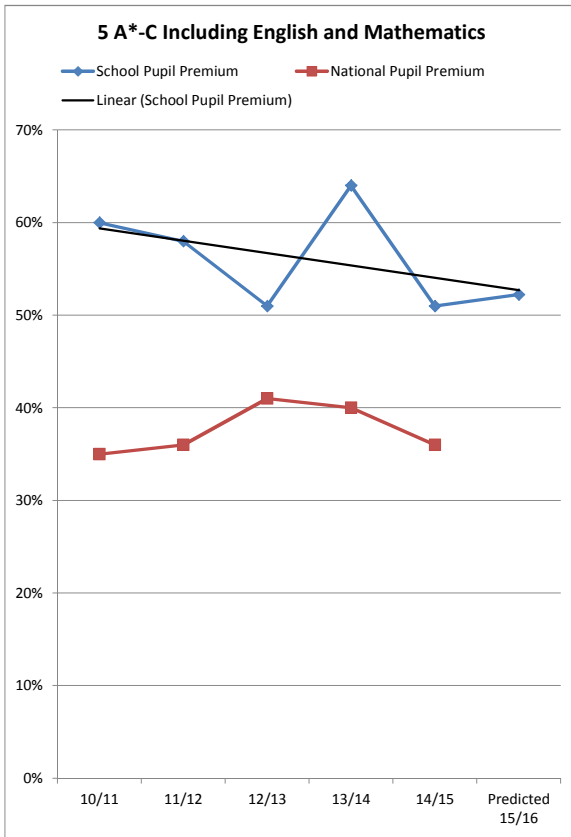
Footnotes:

School history from RAISEOnline: <http://www.raiseonline.org>

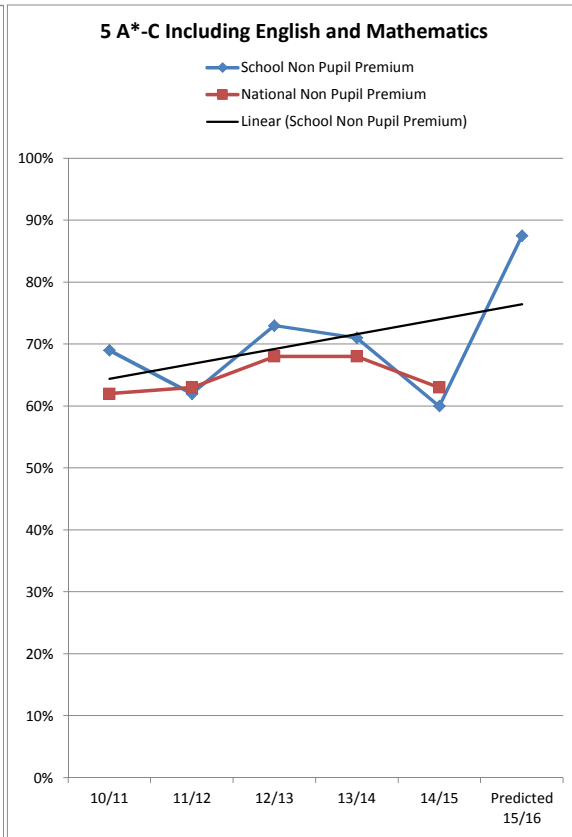
School Predictions from 4Matrix School Data; based on current teacher judgements

No national prediction data available

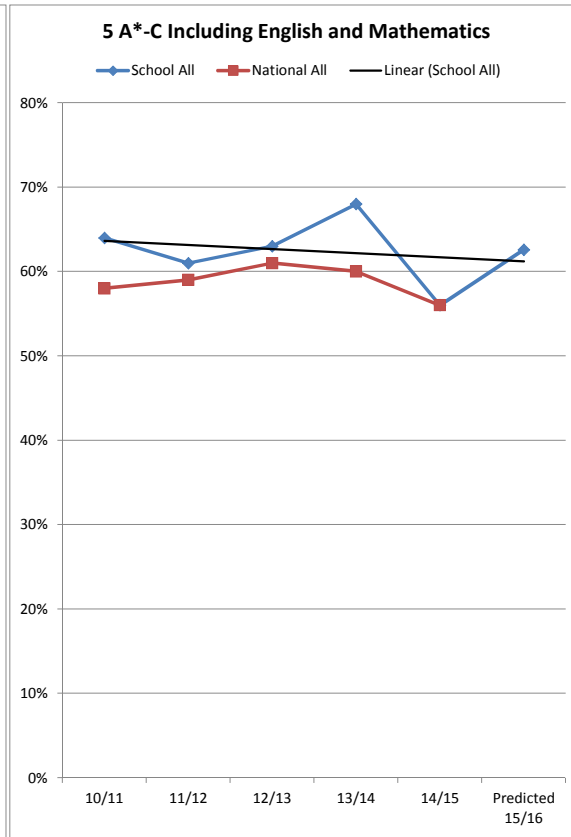
Pupil Premium



Non Pupil Premium

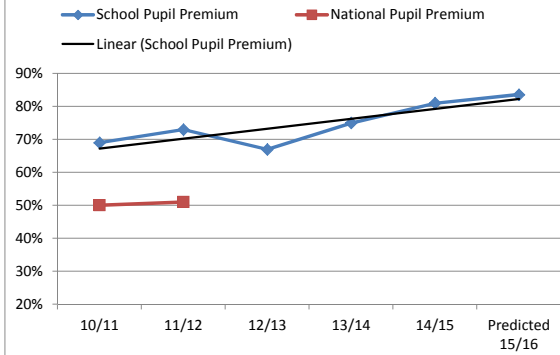


All Students



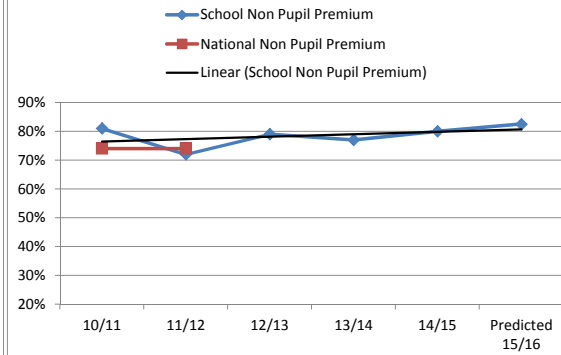
Pupil Premium

A*-C English



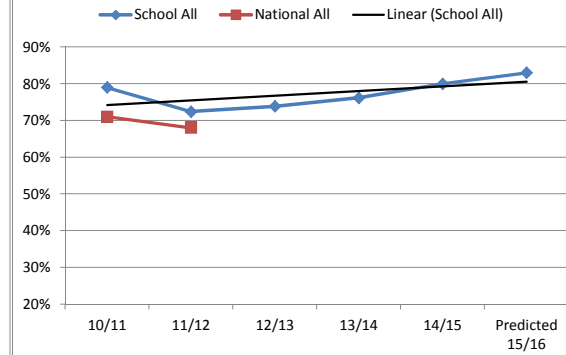
Non Pupil Premium

A*-C English



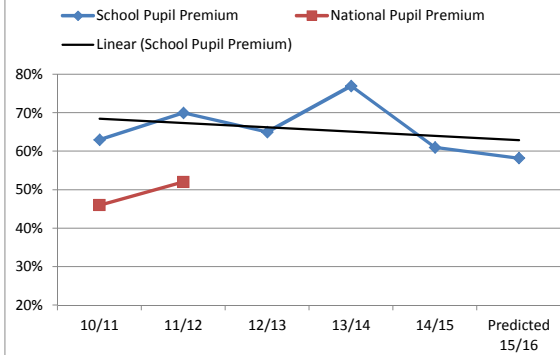
All Students

A*-C English



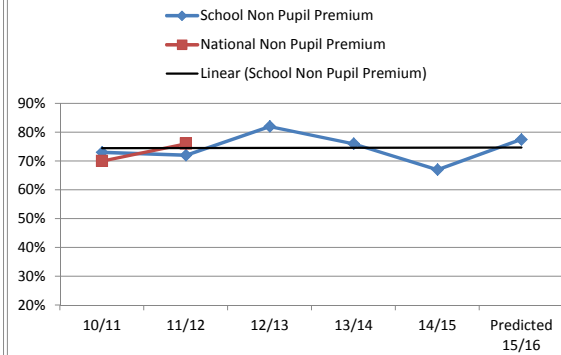
Pupil Premium

A*-C Mathematics



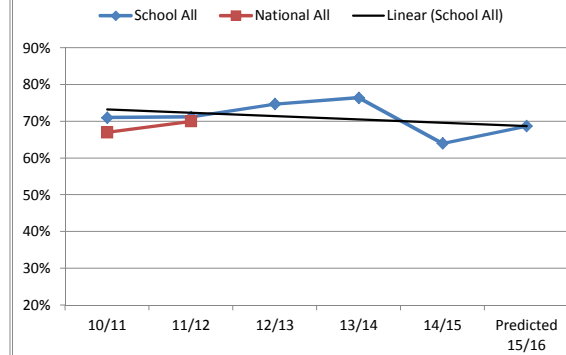
Non Pupil Premium

A*-C Mathematics



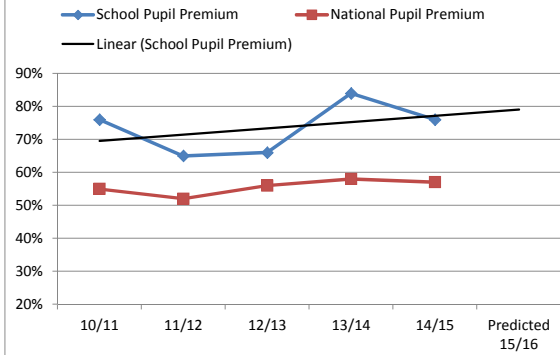
All Students

A*-C Mathematics



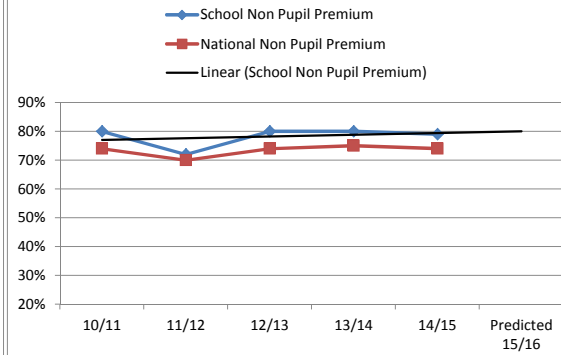
Pupil Premium

English 3 Levels Progress



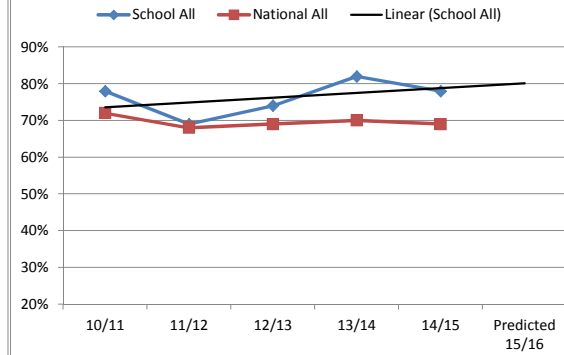
Non Pupil Premium

English 3 Levels Progress



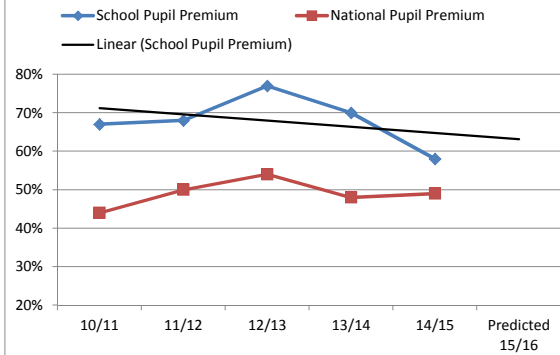
All Students

English 3 Levels Progress



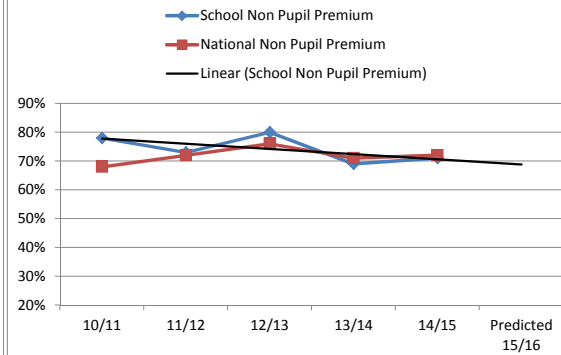
Pupil Premium

Mathematics 3 Levels Progress



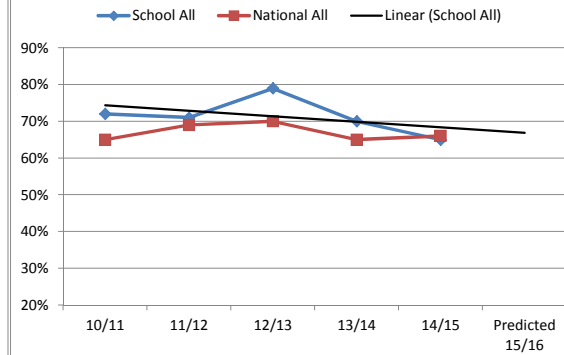
Non Pupil Premium

Mathematics 3 Levels Progress



All Students

Mathematics 3 Levels Progress



Pupil Premium Progress 8

2015 Results	All	Pupil Premium	Non Pupil Premium	Gap
Progress 8	-0.12	+0.36	-0.17	+0.53
Attainment 8	4.91	5.58	4.84	+0.72
Threshold	57.2%	93.3%	53.1%	+40.1%

2016 Predictions	All	Pupil Premium	Non Pupil Premium	Gap
Progress 8	+0.09	-0.05	+0.22	-0.27
Attainment 8	5.11	4.90	5.30	-0.40
Threshold	65.3%	56.7%	72.5%	-15.8%